

RUBBER CORRUGATED MATTING

FINE RIB

Commercial Grade

Tensile Strength: 520 PSI

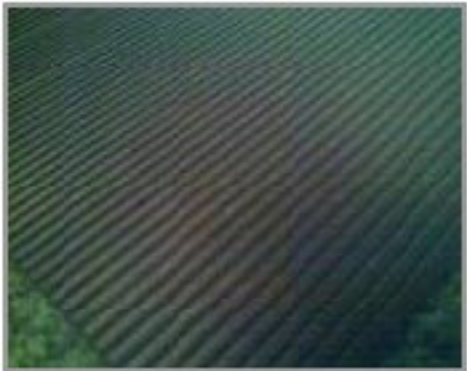
Elongation: 260% Color: Black

Durometer: 65 +/- 5 deg Temp. Range: -20F to +180F

Desc: Rubber Ribbed Matting

<u>Gauge</u>	<u>Width</u>	<u>Ln. Ft/Roll</u>	<u>Style</u>	<u>Lbs/Roll</u>	<u>Item Code</u>
1/8"	36"	100'	Ribbed	234	CM-4-36
1/8"	48"	100'	Ribbed	376	CM-4-48

Additional sizes available in 72" -- Call Customer Service



1/8" RIBBED MATTING

COMPOUND# POLYMER	SBR			
ASTM METHOD	DESCRIPTION	TYPICAL VALUE	UNITS	
D2240	HARDNESS	68	SHORE A	
D412	100%MODULUS		PSI	
D412	300%MODULUS		PSI	
D412	TENSILE	520	PSI	
D412	ELONGATION	260	%	
D624	TEAR		LBS/IN	
D1630	NBS ABRASION		%	
D2137	COLD TEMPERATURE	-10	'C	
D1171	OZONE RESISTANCE	70 HOURS @ 50	PPHM 3	
D257	VOLUME RESISTIVITY		Ohm-cm	
D395B	COMPRESSION SET	22 HOURS	@ 100'C	21%
D2084	CURED @ 151'CT2		min.	
	CURED @ 151'C T95		min.	
D1646	MOONEY SCORCH 135'C		min.T5	
D1646	VISCOSITY 100'C		ML4	
	HEAT AGING	72 HOURS	@ 70'C	
D573	CHANGED-HARDNESS	3	POINTS	
	CHANGED-TENSILE	8	%	
	CHANGED-ELONGATION	-12	%	
D471	OIL AGING #3 OIL	70 HOURS	@ 100'C	
	CHANGED-HARDNESS		POINTS	
	CHANGED-TENSILE		%	
	CHANGED-ELONGATION		%	
	CHANGED-MASS		%	
	CHANGED-VOLUME		%	

THICKNESS	TOLERANCE	WIDTH	TOLERANCE
1/32" = 0.031	0.027~0.039	36"	±0.25"
1/16" = 0.063	0.055 ~ 0.071	48"	±0.30"
3/32" = 0.094	0.087 ~ 0.102	52"	±0.35"
1/8" = 0.125	0.118 ~ 0.134	72"	±0.50"
3/16" = 0.189	0.177 ~ 0.201		
3/64" = 0.047	0.039 ~ 0.055		
1/4" = 0.252	0.240 ~ 0.264		
3/8" = 0.374	0.358 ~ 0.390		
1/2" = 0.5	0.472 ~ 0.532		
3/4" = 0.748	0.709 ~ 0.787		
1" = 1	0.945 ~ 1.055		